

Your support of United Way through giving, advocating and volunteering improves education, income and health

Our Mission:

To mobilize community resources to meet people's needs

Our Values:

- Respect the dignity of all people
- Lead in addressing people's needs
- Strive for excellence
- Ensure quality services and programs
- Promote and support volunteerism as a vital community resource
- Be accountable for resources
- Maintain integrity in all endeavors

Our Vision:

- Creating awareness
- Building alliances
- Demonstrating accomplishments

Our Community:

United Way of the Mid-South serves Fayette, Lauderdale, Shelby and Tipton counties in Tennessee; Crittenden county in Arkansas; DeSoto, Tate and Tunica counties in Mississippi.

Did You Know?

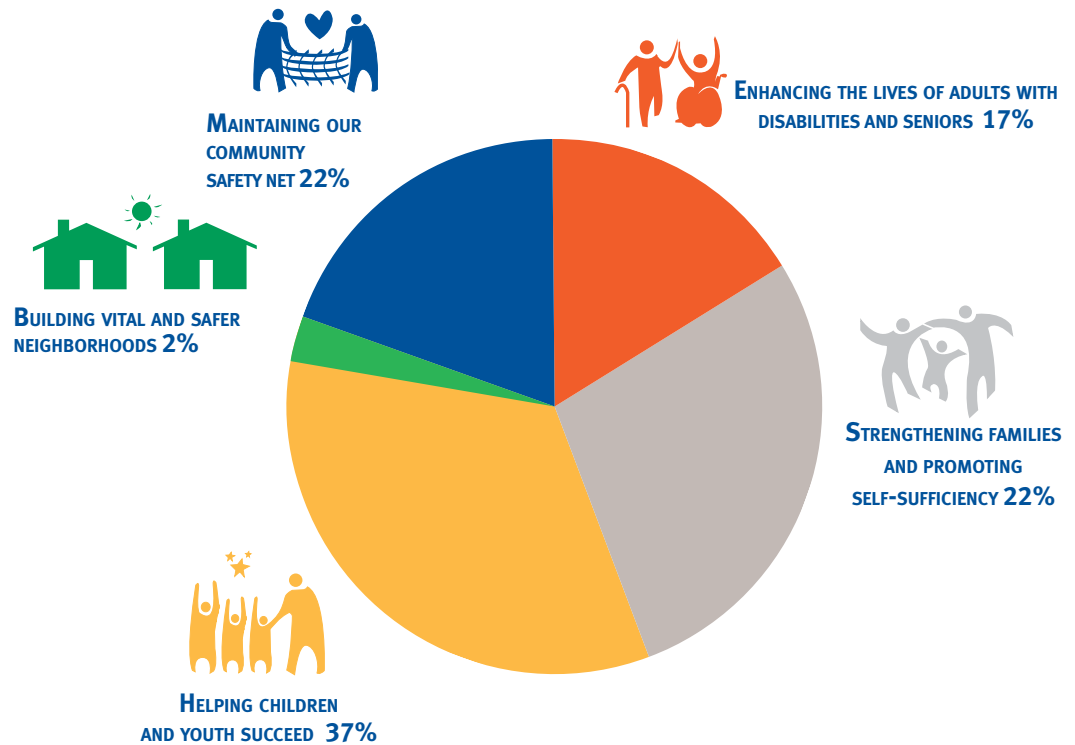
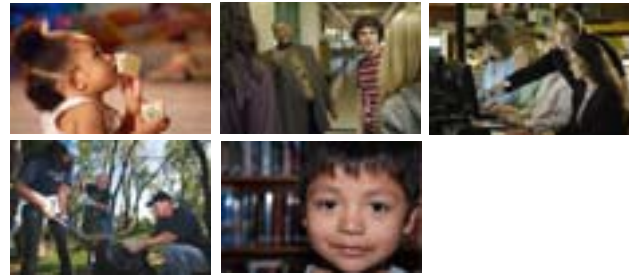
- United Way helps support and fund over 200 life-impacting programs at more than 100 nonprofit organizations across the Mid-South.
- United Way supported programs impact almost 350,000 people - nearly 1/3 of the Mid-South's population!
- Over 9,000 people choose to serve as United Way volunteers every year.
- United Way of the Mid-South employs a staff of less than 50 people, far smaller than that of other United Way organizations which raise similar amounts of support.

More Questions?

You can learn more about United Way and its impact on our community at www.uwmidsouth.org
 United Way of the Mid-South is located at 6775 Lenox Center Court, Suite 200, Memphis, TN 38115.
 You can call us at 901-433-4300

This sheet reflects information available as of July 21, 2008.

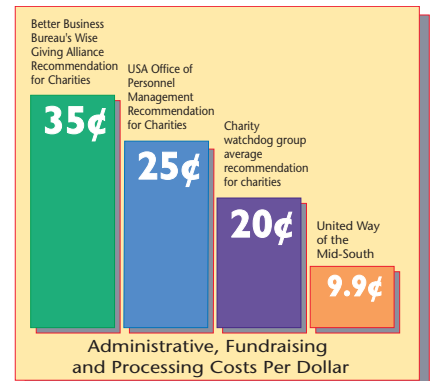
Make a difference in someone's life by supporting United Way.



We watch the bottom line to maximize your gift's impact.

United Way of the Mid-South runs volunteer-driven fundraising campaigns with low costs, high standards, and strong ethical values. Our administration and fundraising overhead of only 9.9 cents per dollar raised in the fundraising campaign is far lower than the 35 cents recognized by the Better Business Bureau's Wise Giving Alliance, a national nonprofit "watchdog" group, or the 25 cents recognized by the USA Office of Personnel Management, or the 20 cents measure which earns the highest ratings by charity watchdog groups.

In fact, News Channel 3 reports that United Way has one of the lowest overhead costs in the region! (July 13, 2005).



United Way of the Mid-South